

OUR VISION

At Toni's Kitchen we see food insecurity as a concrete and solvable problem that, once addressed, will reduce the impact of other economic stressors on low-income families and seniors.

Food insecurity ends when every resident goes to sleep at night knowing that their family is well nourished and they have reliable access to healthy food going forward. By removing that stress, those who are struggling can move forward with the emotional and financial space to address other economic challenges.

Toni's Kitchen has created a robust infrastructure of 'backbone' programs (soup kitchen, choice pantry, pop-up markets) that work with a network of over 60 community partners to embed food throughout our community in organizations that already work with low-income residents - schools, pre-k's, tutoring programs, ESL classes, libraries, mentoring programs and programs for older adults. This network is tested and effective.

This project to expand our physical space will allow us to build our capacity to fully implement this network solution throughout our community in a way that respects the dignity of those served and, importantly, that can expand and contract as the socio-economic pressures around low-income populations change.



CAN YOU HELP?

REACH OUT TO:

Suzanne Weinberg

Project Committee Chair
community@toniskitchen.org
or

Anne Mernin

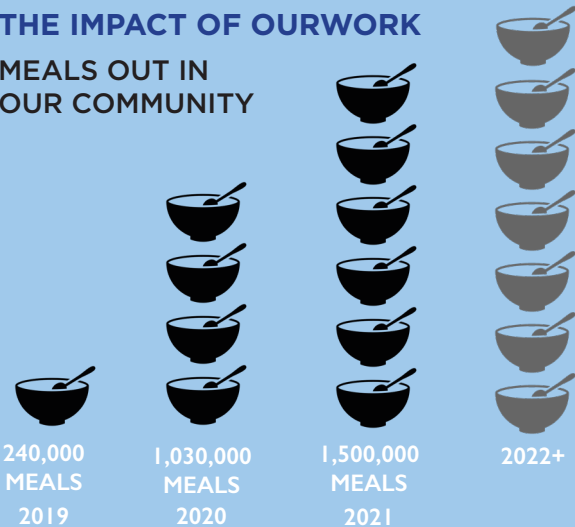
Executive Director
annemernin@toniskitchen.org



Growth for Good:
An Expansion Project
to End Food Insecurity

An initiative to ensure that every
child, parent and older
adult sleeps at night without worrying
about access to healthy food

THE IMPACT OF OURWORK
MEALS OUT IN
OUR COMMUNITY



St. Luke's Episcopal Church
73 S. Fullerton Ave.
Montclair, NJ 07042



TONI'S KITCHEN
A ministry of St. Luke's Church

ABOUT US

Members of St. Luke's Church began Toni's Kitchen in 1982 as a small soup kitchen. Today, Toni's Kitchen is 'more than soup,' serving families, children, recent immigrants, those without housing and other neighbors with food need.

The COVID-19 pandemic revealed the depth of food need within our community. Previously hidden, unmet needs were suddenly visible. Families without adequate savings to withstand these challenging circumstances became food insecure overnight.

Toni's recognizes the diversity of populations with food insecurity through its specially designed programs. Toni's Kitchen uses a community partner model to provide food in ways that respect the dignity of those we serve while improving health and fostering independence.



Who Are Our Neighbors With Food Insecurity?

- Those without housing or with unstable housing
- Older adults with limited resources
- Families with young children
- Recent immigrants
- Neighbors facing a temporary financial setback
- Neighbors doing shift work
- People with special needs including chronic illness

ABOUT THE PROJECT

At Toni's Kitchen, we believe that ending food insecurity in our community is within reach. The goal of this project is to provide the facilities needed to truly realize that goal within the next 3-5 years.

Toni's Kitchen is now providing over 1.5 million meals/year in our community and is doing this in the same space used in 2019 when we were providing 240,000 meals/year. When Covid-19 hit, our dining room turned into a warehouse for pallets of food to meet the huge spike in demand. Conference rooms became aisles of grocery shelves and soup kitchen meals were packaged up for take-away.

We now dream of reopening our dining room to invite those without housing back in for a homemade meal served at our tables. We imagine the space to pack groceries in ways that ensure each community - families,

seniors, children - are receiving healthy food appropriate to their needs.

The Project to End Food Insecurity will make 5000+ square feet of currently inaccessible space at St. Lukes available to Toni's Kitchen. Our dining room will return to a warm gathering space. We will have the food packaging space needed to ensure all children and families go to sleep without worries about food. Our new walk-in refrigeration will keep dairy and produce fresh for our 60+ community partner programs. This new space will allow lessons learned and programs tested during the pandemic to be fully realized in our community.

As we feel the global winds of shifting food supply, economic disruptions and climate challenges, a resilient and elastic network deeply embedded in our community becomes ever more important. Please help us realize this goal with a generous donation!